



The Foundation  
of the Pennsylvania Medical Society

The Foundation of the Pennsylvania Medical Society

# 2020 IMPACT REPORT

—— YOUR WELLNESS. OUR PRIORITY. ——



*The mission of the Foundation of the Pennsylvania Medical Society is to provide programs and services for individual physicians and others that improve the well-being of Pennsylvanians and sustain the future of medicine.*

## TABLE OF CONTENTS

|                                   |                           |
|-----------------------------------|---------------------------|
| <b>Board of Trustees</b>          | <a href="#"><u>2</u></a>  |
| <b>Message from the Chair</b>     | <a href="#"><u>3</u></a>  |
| <b>Executive Director Report</b>  | <a href="#"><u>4</u></a>  |
| <b>Physicians' Health Program</b> | <a href="#"><u>6</u></a>  |
| <b>Student Financial Services</b> | <a href="#"><u>10</u></a> |
| <b>LifeGuard Program®</b>         | <a href="#"><u>18</u></a> |
| <b>Financials</b>                 | <a href="#"><u>22</u></a> |
| <b>Donors</b>                     | <a href="#"><u>28</u></a> |
| <b>Committees &amp; Staff</b>     | <a href="#"><u>49</u></a> |

## BOARD OF TRUSTEES

*The Foundation of the Pennsylvania Medical Society thanks the members of our Board of Trustees for their gracious leadership, thoughtful insight and unwavering dedication to our mission.*

**Virginia E. Hall, MD, FACOG, FACP – *Chair***

**Paul F. Dende, DO, FACP – *Vice Chair***

**William J. West Jr., MD – *Treasurer***

**Heather A. Wilson, MSW, CFRE, CAE – *Secretary***

**Donna Baver Rovito**

**Kenneth M. Certa, MD**

**William R. Dewar III, MD, FACP**

**Candace R. Good, MD**

**Daniel B. Kimball, Jr., MD, MACP**

**Gwendolyn A. Poles, DO, FACP**

**Martin P. Raniowski, MA, CAE – *PAMED Executive Vice President***

**Lynda Thomas-Mabine, MD, FACOG**

**John Francis Curtis, IV – *Medical Student Trustee***

**Anuranita Gupta – *Medical Student Trustee-Elect***

## MESSAGE FROM THE CHAIR



The past year has brought unprecedented challenges. In 2020, the whole world changed. We applaud the bravery and courage of our frontline workers who faced the most difficult circumstances. The Foundation of the Pennsylvania Medical Society adapted to best serve you safely during the COVID-19 pandemic by seamlessly transitioning our programs to a virtual platform.

So much has changed in 2020. We remain grateful for what is constant – your support. We could not do this life-changing work without your generosity. Because of you, we are able to continue serving our family of medicine. Thank you for making a difference.

---

*We are grateful for your perseverance and dedication to our family of medicine during this most challenging year. Because of your support, we can provide hope for the future.*

---

**Virginia E. Hall, MD, FACOG, FACP**  
*Chair, The Foundation of the Pennsylvania Medical Society*

## EXECUTIVE DIRECTOR REPORT



Our 2020 Impact Report allows us a moment to pause and examine the positive impact the Foundation has had on its many constituencies. In this report we bring our mission to life and provide critical data to illustrate how we fulfill our commitment to the physician community.

In this unprecedented year, as we weathered a global pandemic together, “thank you” seems less than sufficient when I search for the words to express my gratitude to our Board of Trustees, Foundation staff and the many donors for their investments of time, talent and treasure in every avenue of our life-changing work. Within the pages of this booklet, you will find details on the dozens of students we have assisted through our loans and scholarships, easing the financial burden on the future of medicine. You will find stories from real physicians who have returned to their craft after recovering from substance use disorders, mental illness and other behavioral concerns. Finally, through our LifeGuard program, you are helping medical professionals around the country receive fair, unbiased clinical competency evaluations.

Because of our staff’s nimbleness and commitment to serve, we pivoted and adjusted to ensure that there was no interruption in service during 2020. I am extremely proud of the work we have accomplished this year and I am eager to share it with you. Thank you for your continued generous support.

---

*I am proud of the work we have done this year and  
I am eager to share it with you. Thank you for your continued support.*

---

**Heather A. Wilson, MSW, CFRE, CAE**

*Executive Director, The Foundation of the Pennsylvania Medical Society*

## THANK YOU, DR. LAWRENCE JOHN



Thanks to the generosity of Pennsylvania Medical Society Past President, Lawrence John, MD, and his matching \$10,000 donation as part of the “Dr. John Challenge” before the 2020 Pennsylvania Medical Society House of Delegates, more than \$30,000 was donated to the Foundation of the Pennsylvania Medical Society. The Foundation is grateful for Dr. John’s dedication to our life-changing work.

Dr. John was a tireless champion for the Foundation’s programs, especially the Physicians’ Health Program and LifeGuard, during his 2020 PAMED presidency. He dedicated time and treasure to amplifying the issue of physician wellness throughout his term, addressing burnout and mental health issues.

Dr. John’s tremendous act of generosity enables the Foundation to make a positive impact within our family of medicine serving medical students and physicians at every stage of their careers for many generations to come.

*Thank you, Dr. John, for all that you do!*

# PHYSICIANS' HEALTH PROGRAM



**Physicians'**  
**HEALTH**  
**Program**

The Foundation of the Pennsylvania Medical Society

**For more than 30 years, the Physicians' Health Program (PHP) has been helping eligible medical and dental professionals across Pennsylvania during life's most challenging moments.**

The PHP provides monitoring services to Pennsylvania physicians, physician assistants, dentists and other eligible licensed professionals and trainees who are experiencing issues related to substance use disorders, mental health and other behavioral concerns. The services of the PHP are confidential.

## **Our Mission**

**Our mission is to promote early identification and facilitate rehabilitation of physicians and other eligible health care professionals and trainees with concerns relating to substance use disorders, mental health disorders, and/or behavioral concerns. Our goal is to coordinate assessment and treatment as well as provide monitoring and advocacy to ensure the safe practice of their profession, and the safety of the public.**



## PHYSICIANS' HEALTH PROGRAM



In January, we welcomed **Edwin Kim, MD, MRO** as a part-time medical director. Dr. Kim also serves as an assistant professor in clinical psychiatry at the University of Pennsylvania and as medical director of the Charles O'Brien Center for Addiction Treatment, an outpatient addiction psychiatry clinic.



In February, we welcomed **Alice Dunkin, NPT4** as an assistant case manager. Prior to joining the PHP team, she was employed for 16.5 years at the Pennsylvania Psychiatric Institute in the Partial Hospital Program. She worked in group rooms with children and adolescents and as a resource coordinator.

In 2020, the PHP:

Received **200** total referrals

Signed **98** agreements

Average number of cases monitored per month  
in 2020 = **428** cases, 35 less cases per month  
than 2019

#### REFERRALS BY LICENSE TYPE

|            |    |
|------------|----|
| DDS        | 10 |
| DHY        | 19 |
| DMD        | 9  |
| DO         | 30 |
| DPM        | 2  |
| EFDA/DASST | 7  |
| MD         | 83 |
| PA/PAC     | 19 |
| ST         | 20 |
| VMD        | 1  |

#### TOTAL NUMBER OF AGREEMENTS

|                        |    |
|------------------------|----|
|                        | 98 |
| Substance Use Disorder | 50 |
| Re-signing             | 17 |
| Interstate             | 9  |
| Sobriety Challenge     | 11 |
| Psychiatric            | 5  |
| Long-Term              | 4  |
| Lifetime Agreements    | 4  |
| Non-Advocacy           | 2  |
| Occupational           | 0  |



The PA PHP continues to be involved with the Federation of State Physician Health Programs. Executive Director of the Foundation, Heather Wilson, MSW, CFRE, CAE is on the Board of Directors. Program Director, Tiffany Booher, MA, LPC, CAADC, CIP, CCSM is on the Performance Enhancement and Effectiveness Review (PEER™) Committee (PEERC). Medical Director, Raymond Truex, Jr., MD, FACS, FAANS is on the Nominating committee. Medical Director, Edwin Kim, MD, MRO is on the Publications and Public Policy committees.



**In 2020, the PHP conducted its impact survey, with a response rate of 39.77 percent. An impressive 91.18 percent of respondents said, “they have an active license to practice their profession” and 85.71 percent “are working in their chosen profession.”**



**74.29 percent of respondents** were satisfied with their experience as a PHP participant.

---

***Big accomplishments for the year:***

- *PHP went electronic*
- *Developed burnout resource for practices and health systems*

## STUDENT FINANCIAL SERVICES



The Foundation of the Pennsylvania Medical Society

The Foundation of the Pennsylvania Medical Society aims to ease the financial burden that medical students feel. Through scholarships and affordable loans, Pennsylvania residents attending medical school enjoy personalized customer service tailored to their unique needs.

Through contributions from donors like you, the Foundation is helping to fund the future of medicine. Since 1948, the Foundation has awarded loans and scholarships totaling \$22,610,484 to 4,707 students. With the power of your generosity, the future of medicine is bright – and affordable.



Since **1948**,  
the Foundation has awarded **\$22,610,484**  
to **4,707** students.



THE FOUNDATION AWARDED  
**22 scholarships**  
totaling **\$60,052**  
to **21 medical students**



In 2020, the Foundation awarded  
**\$483,625 in loans to 54 students**

Total scholarships awarded increased by nearly \$15,000 and six additional students received awards compared to 2019.

---

*Medicine is my calling. The integration of my education, professional experiences and personal experiences has equipped me to enter the field with an unrelenting purpose. I intend to positively change the future of medicine and am poised to make an impact not only in my own community of Pittsburgh, but the world as a whole.*

---

**Stephen P. Canton**

*2020 Allegheny County Medical Society Student Scholarship and Foundation Education Award scholarship recipient*




---

*Medical school has been incredibly rewarding and humbling, as I realize how unique of an opportunity I am afforded. I realize every day, even in the midst of the stressors of medical school, the luxury it is to search for purpose, meaning, and fulfillment in my career. I have always been dedicated to becoming a front-line physician.*

---

**Kaleb T. Bogale**

*2020 Foundation Education Award Scholarship recipient*



Thanks to contributions from the  
Foundation of the Pennsylvania Medical Society's  
Board of Directors and other Pennsylvania physicians,

THE FOUNDATION EDUCATION  
AWARD SCHOLARSHIP WAS AWARDED  
FOR THE FIRST TIME IN 2020 TO  
QUALIFIED UNDERREPRESENTED  
MINORITY MEDICAL STUDENTS  
ATTENDING AN ACCREDITED  
PENNSYLVANIA MEDICAL SCHOOL.



thank  
you!

## 2020 ALLIANCE MEDICAL EDUCATION SCHOLARSHIP AWARD RECIPIENTS



**Meaghan Dougher**

*Penn State University College of Medicine, Class of 2022*

**\$2,500**



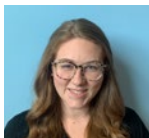
**McKayla Mawn**

*Lewis Katz School of Medicine, Temple University, Class of 2022*

**\$2,500**

---

### **BARBARA PRENDERGAST AWARD** Total Disbursed: \$2,500



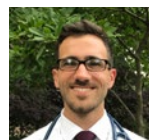
**Ashlyn Brown**

*Drexel University College of Medicine, Class of 2021*

**\$2,500**

### **ROBERT AND ARLENE OYLER AWARD**

Total Disbursed: \$3,000

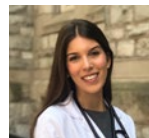


**Matthew Duda**

*Perelman School of Medicine, University of Pennsylvania, Class of 2021*

**\$3,000**

### **DR. WILLIAM J. WEST JR. AWARD** Total Disbursed: \$5,500



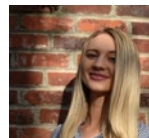
**Kim Firn**

*Perelman School of Medicine, University of Pennsylvania, Class of 2021*

**\$3,000**

### **DAUPHIN COUNTY MEDICAL SOCIETY AWARD**

Total Disbursed: \$5,000



**Leah Goldberg**

*Lewis Katz School of Medicine, Temple University, Class of 2022*

**\$2,500**



## 2020 SCHOLARSHIP RECIPIENTS

### ALLEGHENY COUNTY MEDICAL SOCIETY STUDENT SCHOLARSHIP Total Disbursed: \$4,000



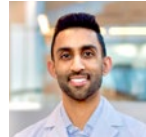
**Stephen P. Canton, Allegheny County**  
*University of Pittsburgh School of  
Medicine, Class of 2021*  
**\$4,000**

### BLAIR COUNTY MEDICAL SOCIETY SCHOLARSHIP Total Disbursed: \$2,500



**Naaila Ali, Blair County**  
*Lake Erie College of Osteopathic  
Medicine, Class of 2022*  
**\$2,500**

### ENDOWMENT FOR SOUTH ASIAN STUDENTS OF INDIAN DESCENT SCHOLARSHIP Total Disbursed: \$3,000



**Andrew Parambath,**  
**Montgomery County**  
*Perelman School of Medicine at  
University of Pennsylvania,  
Class of 2023*  
**\$3,000**

### FOUNDATION EDUCATION AWARD SCHOLARSHIP Total Disbursed: \$4,552



**Kaleb T. Bogale, Lancaster County**  
*Penn State University College of  
Medicine, Class of 2022*  
**\$2,276**



**Stephen P. Canton, Allegheny County**  
*University of Pittsburgh School of  
Medicine, Class of 2021*  
**\$2,276**

**LEHIGH COUNTY MEDICAL AUXILIARY'S  
SCHOLARSHIP AND EDUCATIONAL FUND  
SCHOLARSHIP** Total Disbursed: \$2,500

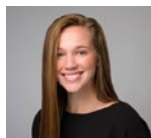


**David S. Bailey, Lehigh County**  
*Penn State University College of Medicine,  
Class of 2022*  
**\$2,500**

**LYCOMING COUNTY MEDICAL SOCIETY  
SCHOLARSHIP** Total Disbursed: \$9,000



**Hannah R. Bohr, Lycoming County**  
*Geisinger Commonwealth School of  
Medicine, Class of 2021*  
**\$3,000**



**Morgan L. Chambers, Lycoming County**  
*Penn State University College of Medicine,  
Class of 2021*  
**\$3,000**



**Rosa C. Roman, Lycoming County**  
*Geisinger Commonwealth School of  
Medicine, Class of 2021*  
**\$3,000**

**MONTGOMERY COUNTY MEDICAL SOCIETY  
SCHOLARSHIP – WILLIAM W. LANDER, MD,  
MEDICAL STUDENT SCHOLARSHIP** Total Disbursed: \$4,000



**Cara E. Pearson, Montgomery County**  
*Penn State University College of  
Medicine, Class of 2024*  
**\$2,000**



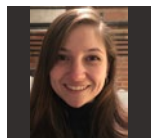
**Melissa L. Stockton-Brown,  
Montgomery County**  
*Cooper Medical School of Rowan  
University, Class of 2024*  
**\$2,000**

## MYRTLE SIEGFRIED, MD, AND MICHAEL VIGILANTE, MD, SCHOLARSHIP FUND

Total Disbursed: \$2,00



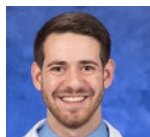
**Kaitlyn A. Rodriguez,**  
**Northampton County**  
*Duke University School of Medicine,*  
*Class of 2024*  
**\$2,000**



**Sarah Fortna**  
*Jacobs School of Medicine,*  
*University at Buffalo,*  
*Class of 2023*  
**\$1,000**

## SCOTT A. GUNDER, MD, DCMS PRESIDENTIAL SCHOLARSHIP

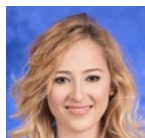
Total Disbursed: \$1,500



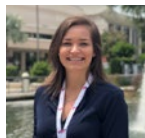
**David L. Brinton,** Dauphin County  
*Penn State University College of*  
*Medicine, Class of 2023*  
**\$1,500**

## SHAH FAMILY SCHOLARSHIP

Total Disbursed: \$10,000



**Claire Cohen,** Philadelphia County  
*Penn State University College of*  
*Medicine, Class of 2024*  
**\$5,000**



**Wiktor Gocal,** Bucks County  
*Drexel University College of Medicine,*  
*Class of 2023*  
**\$5,000**



## LIFEGUARD PROGRAM



Since its inception in February 2011, LifeGuard, a nationally recognized program for clinical competency assessment, has assisted 242 physicians from 29 states and the District of Columbia successfully completing the program. Over the course of the 2020 calendar year, there were 63 physicians enrolled.

Enrollment has continued to increase since LifeGuard moved to the Foundation in 2016.

---

*At LifeGuard, we provide an unbiased and comprehensive assessment to preserve physician careers.*

---

**Marcia Lammando, RN, BSN, MHSA**

In 2020, 40 physicians completed their respective LifeGuard pathway. The information is highlighted below. The number of physicians completing their program in 2020 increased by 14 percent compared to 2019.

- Re-entry/Initial Licenses 4
- Reinstatement/Disciplinary Action 11
- FFD/Late Career Assessment 9
- Quality of Care 10
- Practice Monitoring/ATM Programs 4
- Preceptorship Oversight 1
- Professional Assessment 1

Since inception, LifeGuard has served physicians in 29 states and the District of Columbia.



## LIFEGUARD – COVID-19 IMPACTS

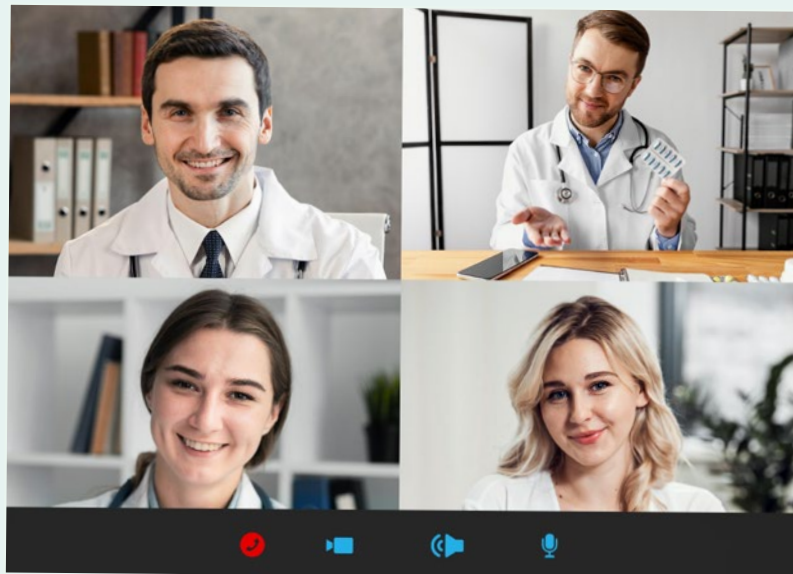
- Mandated office closures – Mid-March through end of June 2020

- All scheduled assessments postponed until further notice
- All staff working remotely
- Responding to physicians and referral sources – LifeGuard continued to develop program proposals

- Office re-opened for very limited in-person assessments week of June 23, 2020

- Developed virtual assessment methodologies decreasing the amount of time for in-person assessments
- As COVID numbers continued to spike upwards:
  - Worked with partners to identify assessment resources in other states alleviating travel to Pennsylvania
  - Implemented virtual proctoring

## LIFEGUARD ADVANCEMENTS IN 2020



- Received first referral from Michigan State Board of Medicine.
- Collaborated with the Michigan State Medical Society to explore potentially establishing “LifeGuard North.”
- Converted all CME courses to live virtual participation. Collaborated with KSTAR to minimize faculty costs, etc.
- Initiated a response to ABEM for board re-eligibility assessment processes.

# FINANCIAL HIGHLIGHTS

*\*Unaudited 2020 financials*

## 2020 IN NUMBERS FOR THE YEARS ENDED DECEMBER 31, 2019 AND 2020

Combined Financial Highlights (Foundation, PAMED Charitable Trust, Medical Legacy Fund)

### ASSETS, LIABILITIES, AND NET ASSETS



|             | 2020*        | 2019         |
|-------------|--------------|--------------|
| Assets      | \$21,066,984 | \$15,869,233 |
| Liabilities | \$2,089,295  | \$2,203,190  |
| Net Assests | \$18,977,689 | \$13,666,043 |



### SUMMARIES OF REVENUES AND EXPENSES

|                                | 2020*         | 2019          |
|--------------------------------|---------------|---------------|
| Contributions & Admin Grants   | \$1,567,975   | \$1,671,914   |
| Project Grant                  | \$4,250,000   | \$0           |
| Fee for Service                | \$1,015,798   | \$1,167,022   |
| Student Loan Interest Income   | \$200,377     | \$211,074     |
| Investments and Other Revenues | \$1,021,878   | \$1,457,385   |
| Total Expenses                 | (\$2,746,820) | (\$2,704,896) |
| Excess Revenue Over Expenses   | \$5,309,208   | \$1,802,499   |





## ANNUAL OPERATING EXPENSES

**\$0.76 : \$1** goes to program services

**\$0.14 : \$1** goes to management & general administration

**\$0.10 : \$1** goes to fundraising



## REVENUE SOURCES

|                              |     |
|------------------------------|-----|
| Fee For Services             | 18% |
| Contributions & Admin Grants | 22% |
| Project Grants               | 60% |



## TOTAL PROGRAM SERVICES

|                                |     |
|--------------------------------|-----|
| Education and Service Projects | 6%  |
| Loans and Scholarships         | 15% |
| LifeGuard                      | 31% |
| PHP                            | 48% |



*Your generosity holds power. Thank you for your donation to the Foundation in 2020. Your gift changes lives.*

**Lori M. Storm**

Manager of Philanthropy and Hospital Relations

[lstorm@pamedsoc.org](mailto:lstorm@pamedsoc.org) | (717) 558-7813

### **DISTINGUISHED LIFETIME FELLOWS**

#### **Ensuring the future through commitment of a legacy gift**

The Foundation of the Pennsylvania Medical Society Fellows is an elite group who made provisions to advance the work of the Foundation in the areas of education, wellness and clinical excellence. Utilizing various estate planning tools, such as bequest gifts, charitable gift annuities and trusts, these members demonstrate their commitment to the Foundation's mission and ensure a lasting legacy of physician excellence for future generations.

Dr. Doris G. Bartuska\*

Dr. and Mrs. Jasper G. Chen See\*

Dr. James M. Cole\* and Mrs. Marion Cole

Dr. Jeanne A. Cooper\*

Drs. Harold R. Cottle and Betty L. Cottle\*

Dr. David Smith\* and Mrs. Nancy C. Davis

Drs. Jitendra M. Desai and Saryu J. Desai  
 Dr. and Mrs. Jan R. J. Devries  
 Dr. J. Albert Eyler\* and Mrs. Doris Eyler  
 Dr. Henry Fetterman\* and Mrs. Marian H. Fetterman  
 Dr. Jean L. Forest\*  
 Dr. Raymond C. Grandon\* and Mrs. Doris Grandon  
 Dr. Abram M. Hostetter\* and Mrs. Patricia Hostetter  
 Dr. and Mrs. Frank W. Jackson  
 Drs. Albert S. Kroser and Lila\* Kroser  
 Dr. Stefan P. Kruszewski  
 Dr. and Mrs. Robert L. Lasher\* and Mrs. Dolores Lasher  
 Dr. and Mrs. John W. Lawrence\*  
 Dr. and Mrs. Herbert Levin\*  
 Dr. Clifford H. Lyons  
 Dr. and Mrs. Wilbert A. Lyons

Dr. and Mrs. Mathew Marshall\*  
 Dr. and Mrs. David Miller\*  
 Dr. and Mrs. Donald E. Parlee  
 Dr. and Mrs. Joseph Pascal  
 Dr. and Mrs. Gerald W. Pifer  
 Dr. and Mrs. James R. Regan\*  
 Dr. John J. Robertson and Mrs. E.\* Annette Robertson  
 Dr. Joan M. Ruffle and Mr. George E. Gish  
 Dr. and Mrs. Joseph A. Savastio\*  
 Drs. Jitendra N. Shah and Lina J. Shah  
 Dr. Ferdinand L. Soisson Jr. and Mrs. Dorothy\* L. Soisson  
 Dr. and Mrs. Fred Teichman  
 Dr. Raymond C. Truex Jr.  
 Dr. and Mrs. George J. Vukmer  
 Dr. and Mrs. Leonard B. Zadecky

## ● HOSPITAL SUPPORT

### Ambassador \$10,000 and Above

Geisinger Medical Center <sup>M & H</sup>  
 Lehigh Valley Hospital - Cedar Crest, Hazleton,  
 Muhlenberg, Schuylkill <sup>M & H</sup>  
 Mount Nittany Medical Center <sup>M & H</sup>  
 Penn Medicine at Chester <sup>M</sup>

St. Luke's University Health Network-  
 Bethlehem Campus <sup>M & H</sup>  
 WellSpan York Hospital <sup>M & H</sup>

### ● Visionary \$5,000 to \$9,999

Abington Hospital - Jefferson Health <sup>M & H</sup>

Holy Redeemer Hospital and Medical Center <sup>M & H</sup>  
 Lehigh Valley Hospital – Pocono <sup>M & H</sup>  
 Main Line Health <sup>M & H</sup>  
 Penn Medicine Lancaster General Health <sup>M & H</sup>  
 Penn State Health Milton S. Hershey Medical Center <sup>M & H</sup>  
 Reading Hospital/Reading Health System <sup>M & H</sup>  
 St. Mary Medical Center <sup>M & H</sup>  
 Thomas Jefferson University Hospital <sup>M & H</sup>  
 UPMC Altoona <sup>M & H</sup>  
 UPMC Hamot Medical Center <sup>M</sup>  
 UPMC Passavant <sup>M</sup>  
 WellSpan Gettysburg Hospital <sup>M & H</sup>

● **Leader \$2,500 to \$4,999**

Allegheny General Hospital <sup>M</sup>  
 Chambersburg Hospital <sup>M & H</sup>  
 Doylestown Hospital <sup>M & H</sup>  
 Easton Hospital <sup>M & H</sup>  
 Excelsa Health <sup>M</sup>  
 Forbes Hospital <sup>M & H</sup>  
 Grand View Hospital <sup>M & H</sup>  
 Hahnemann University Hospital <sup>M</sup>  
 Indiana Regional Medical Center <sup>M & H</sup>  
 Jefferson Regional Medical Center <sup>M & H</sup>

Moses Taylor Hospital <sup>M</sup>  
 Ohio Valley General Hospital <sup>M & H</sup>  
 Saint Vincent Health System <sup>M</sup>  
 St. Luke's Sacred Heart Campus <sup>M & H</sup>  
 The Western Pennsylvania Hospital <sup>M</sup>  
 UPMC Horizon <sup>M & H</sup>  
 UPMC McKeesport <sup>M</sup>  
 UPMC Pinnacle Hanover <sup>M & H</sup>  
 UPMC Pinnacle Harrisburg <sup>M</sup>  
 UPMC St. Margaret <sup>M</sup>  
 Washington Health System <sup>M & H</sup>  
 WellSpan Good Samaritan Hospital <sup>M & H</sup>

● **Guardian \$1,000 to \$2,499**

Abington - Lansdale Hospital <sup>M & H</sup>  
 Butler Health System <sup>M</sup>  
 Chan Soon-Shiong Medical Center at Windber <sup>M & H</sup>  
 Chestnut Hill Hospital <sup>M</sup>  
 Children's Hospital of Pittsburgh <sup>M</sup>  
 Conemaugh Memorial Medical Center <sup>H</sup>  
 Eagleville Hospital <sup>H</sup>  
 Einstein Medical Center Philadelphia <sup>M</sup>  
 Evangelical Community Hospital <sup>M</sup>  
 Fox Chase Cancer Center <sup>M & H</sup>

Grove City Medical Center <sup>M & H</sup>  
 Heritage Valley Health System – Beaver <sup>M</sup>  
 Heritage Valley Health System – Sewickley <sup>M</sup>  
 Jeanes Hospital <sup>M & H</sup>  
 Jefferson Health - Northeast <sup>M</sup>  
 Lower Bucks Hospital <sup>M</sup>  
 Magee Womens Hospital of UPMC Health System <sup>M</sup>  
 Meadville Medical Center <sup>M & H</sup>  
 Mercy Catholic Medical Center <sup>H</sup>  
 Monongahela Valley Hospital <sup>M & H</sup>  
 Penn Highlands DuBois <sup>M & H</sup>  
 Penn Highlands Elk <sup>M & H</sup>  
 Philhaven <sup>M</sup>  
 Phoenixville Hospital <sup>M</sup>  
 Pottstown Hospital Tower Health <sup>M</sup>  
 Sharon Regional Medical Center <sup>M & H</sup>  
 St. Clair Hospital <sup>M</sup>  
 St. Luke's Hospital - Palmerton Campus <sup>M</sup>  
 St. Luke's Hospital & Health Network – Quakertown <sup>M</sup>  
 Temple University Hospital <sup>M & H</sup>  
 Uniontown Hospital <sup>M & H</sup>  
 UPMC - Bedford Memorial <sup>M & H</sup>  
 UPMC Somerset <sup>M & H</sup>  
 UPMC Susquehanna <sup>M & H</sup>  
 UPMC Susquehanna Soldiers and Sailors <sup>M & H</sup>  
 Waynesboro Hospital <sup>M & H</sup>

WellSpan Ephrata Community Hospital <sup>M</sup>

● **Benefactor \$500 to \$999**

Children's Hospital of Philadelphia <sup>M</sup>  
 Clarion Hospital <sup>M</sup>  
 Good Shepherd Rehabilitation <sup>M</sup>  
 Millcreek Community Hospital <sup>M & H</sup>  
 Penn Highlands Clearfield <sup>M & H</sup>  
 PennState Health St. Joseph <sup>M</sup>  
 Roxborough Memorial Hospital <sup>M</sup>  
 The Guthrie Clinic/Robert Packer Hospital <sup>M</sup>  
 Tyrone Hospital <sup>M</sup>  
 UPMC Northwest – Seneca <sup>M</sup>  
 UPMC Pinnacle Lititz <sup>M</sup>  
 UPMC Susquehanna Muncy <sup>M & H</sup>  
 Wayne Memorial Community Health Centers <sup>H</sup>

● **Partner \$100 to \$499**

Clarks Summit State Hospital <sup>M</sup>  
 Conemaugh Miners Medical Center <sup>M & H</sup>  
 Corry Memorial Hospital <sup>M</sup>  
 Ellwood City Medical Center <sup>M</sup>  
 Penn Highlands Brookville <sup>M & H</sup>  
 Titusville Area Hospital <sup>M & H</sup>  
 UPMC Kane <sup>M</sup>  
 Wernersville State Hospital <sup>M</sup>

# DONORS

Thank you for your support of the Foundation through your philanthropic gifts during 2020.



**Giving Club membership** is based on a donor's total gifts for the fiscal year January 1 to December 31, 2020. Annual gifts, planned gifts, endowment gifts and matching gifts to any of the Foundation's programs qualify an individual for membership in a giving club.



## GIVING CLUB | Annual Giving Level

|             |                    |
|-------------|--------------------|
| Ambassador  | \$10,000 or more   |
| Visionary   | \$5,000 to \$9,999 |
| Leader      | \$2,500 to \$4,999 |
| Guardian    | \$1,000 to \$2,499 |
| Benefactor  | \$500 to \$999     |
| Partner     | \$100 to \$499     |
| Contributor | Up to \$99         |

## GIVING CLUB

### Ambassador \$10,000 or more

Coverys Community HealthCare Foundation  
Highmark  
Pennsylvania Medical Society  
Raymond C. Truex Jr., MD, FAANS, FAC

### Visionary \$5,000 to \$9,999

Virginia E. Hall, MD, FACOG, FACP, and Mr. John B. Hall  
Medtronic  
Heather A. Wilson, MSW, CFRE, CAE

### Leader \$2,500 to \$4,900

Mr. and Mrs. John G. Conomikes  
Dauphin County Medical Society Alliance  
Eden Charitable Foundation  
Mrs. Marian H. Fetterman  
Edward W. Jew III, MD  
The Pittsburgh Foundation  
Dr. and Mrs. William J. West Jr.

### Guardian \$1,000 to 2,499

Gary Bonfante, DO  
Marsha D. Bornt, MD, and Mr. John Davis

Barry D. Buckingham  
Kenneth M. Certa, MD  
Dr. and Mrs. Bennett Chotiner  
Dr. and Mrs. Theodore A. Christopher  
David A. Csikos, MD, FACP  
Dr. and Mrs. Christopher J. Daly  
Daniel T. Dempsey, MD, FACS, and  
Mrs. Barbara A. Seneca  
Dr. and Mrs. William R. Dewar III  
LeRoy C. Erickson  
Dr. and Mrs. John P. Gallagher  
Thomas Griffin, MD  
Dr. and Mrs. Jeffrey F. Gryn  
Robert E. Haughey, MD  
Dr. and Mrs. Jeffrey M. Hoffman  
Dr. and Mrs. Frank W. Jackson  
Daniel B. Kimball Jr., MD, FACP, and  
C. Eve J. Kimball, MD  
Jon D. Lepley, DO  
Dr. and Mrs. Mark A. Lopatin  
Clifford H. Lyons, MD  
Dr. and Mrs. Donald E. Martin  
Dr. and Mrs. Edward J. McClain III  
Cyril Nathaniel, MD

Martin P. Raniowski, MA  
Dr. and Mrs. Andrew B. Roberts  
Dr. and Mr. Charles F. Romberger-Sklarosky  
Carla M. Rossi, MD  
Dr. and Mrs. Jaan E. Sidorov  
David A. Talenti, MD  
Lynda Thomas-Mabine, MD, FACOG

#### **Benefactor \$500 to \$900**

Robert C. Aber, MD  
Dr. and Mrs. Edward P. Balaban  
Dr. and Mrs. Fred M. Baurer  
Stephanie Benner  
Dr. and Mrs. L. Eamonn Boyle  
John B. Bulger, DO, and Michele A. Neff-Bulger, DO  
Dr. and Mrs. Daniel M. Bursick  
Thomas J. Ciotola, MD  
Dr. and Mrs. Thomas J. Coyle Jr.  
Dr. Joan B. Cracco and Dr. Roger Q. Cracco  
Floyd M. Csir, MD  
Gregory Fazio, MD  
Sharon L. Goldstein, MD, and Mr. Craig Jahnke  
Dr. and Mrs. Andrew W. Gurman  
Mr. and Mrs. Richard J. Hazzouri, CFA

Eileen F. Hennrikus, MD, and William L. Hennrikus, MD  
Dr. and Mrs. Enrique Hernandez  
Dr. and Mrs. Theodore J. Hovick Jr.  
F. Wilson Jackson III, MD, and Cynthia L. Jackson, MD  
Dr. and Mrs. Ronald D. Kratz  
Robin Kroll, MD  
Shirley K. Lewellen  
Dr. and Mrs. Heath B. Mackley  
Dr. and Mrs. Bruce A. MacLeod  
Dr. and Mrs. John R. Mantione Jr.  
Morgan M. McCoy II, MD  
Ann M. McDonald, MD  
Peter E. McNeil, MD  
Regina E. Numrich  
Dr. and Mrs. Edward T. O'Brien  
Kathleen A. O'Farrell, MD  
Parag D. Parekh, MD, and Purvi Parekh, DO  
Mr. and Mrs. Richard Phillips  
Pittsburgh Caduceus Group  
Dr. and Mrs. Warren L. Robinson Jr.  
Dr. and Mrs. Robert A. Ruggiero  
Gary G. Sauer, MD  
Dr. and Mrs. Marc J. Schneiderman



Jon A. Shapiro, MD, DABAM, FASAM, MRO and Babette Zemel, PhD  
Colette Simon, MD  
Dr. and Mrs. Robert J. Swansiger  
Stephen M. Thomas, MD  
Dr. and Mrs. Robert C. Trautwein  
James M. Ulery Jr., MD  
Dawn J. Wang, MD  
Philip M. Wildenhain, MD, and Sarah L. Wildenhain, MD  
Dr. and Mrs. John P. Williams

**Partner \$100 to \$499**

Dr. and Mrs. Karl M. Ahlswede  
Robert K. Aichele Jr., DO  
Mohammad M. Akbar, MD, FACS  
Mary Anne Albaugh, MD, and Dennis P. Borczon, MD  
Sheila M. Anderson, DO  
Margaret S. Atwell, MD, and Mr. Jerrold Atwell  
Linda P. Augelli-Hodor, DO, and Mr. Robert E. Hodor  
Michael J. Azar, MD, and Carol H. Azar, MD  
D. Michael Baxter, MD, and Mrs. Denise Curran  
Kathy E. Baylor-Giorgio, MD, FAAFP  
Christine H. Beck, MD, and Mr. Adalgery Beck  
Dr. and Mrs. Erick J. Bergquist

Kathleen M. Bernau, RN  
Michael W. Best, MD  
Dr. and Mrs. Louis H. Betz  
Roman Oleh Bilynsky, MD  
Edward M. Bleeden, MD  
Dr. and Mrs. Joseph B. Blood Jr.  
Sherry L. Blumenthal, MD  
Richard J. Boal, MD  
Dr. and Mrs. Lester J. Bolanovich  
Jeffrey P. Bomze, MD  
Anthony F. Bonagura, MD  
Patricia Bonitatibus, MD, and Ernest J. Bonitatibus, MD  
Tiffany Booher, MA, LPC, CAADC, CIP, CCSM  
Dr. and Mrs. William N. Bothwell  
Corinna S. Bowser, MD  
Dr. and Mrs. Hugh W. Brallier  
Dr. and Mrs. David A. Brillman  
Dr. and Mrs. Roy D. Brod  
Dr. and Mrs. Donald C. Brown  
Mrs. Judith M. Bucko Herman  
Dr. and Mrs. Roger G. Bucs  
Jeffrey Buetikofer, MD  
Dr. and Mrs. Jerome M. Burke  
Drs. Keith K. and Christina P. Burkhart

Samantha F. Butts, MD  
Christopher J. Buzas, DO  
Anne P. Cadau, MD, and Mr. David Ambarian  
Dr. and Mrs. Gary B. Calandra  
Clara A. Callahan, MD, and Mr. Peter Goodman  
Dr. and Mrs. Howard J. Caplan  
Dr. and Mrs. Patrick J. Carey  
Dr. and Mrs. Robert L. Carrell  
David M. Caruso, MD  
Mr. and Mrs. George Cass  
Robert L. Ceci, MD  
Eduardo A. Cevallos, MD  
Sanjay S. Chandragiri, MD  
Dr. and Mrs. N. David Charkes  
Paula M. Chelko  
Dr. and Mrs. Mahesh D. Chhabria  
Dr. and Mrs. Doo W. Cho  
Dr. and Mrs. Harris R. Clearfield  
Dr. and Mrs. Alan Cohler  
Francis R. Colangelo, MD  
Dr. and Mrs. Bruce A. Colley  
Dr. and Mrs. William G. Combs  
Dr. and Mrs. Kenneth B. Conner

Richard W. Conron Jr., DO, FACS, and  
Kristin Abbuzzi, DO, FACOG  
Dr. and Mrs. William F. Coppola  
Kimberly L. Corba, DO, and Mr. Robert J. Corba  
Michael Cordas Jr., DO  
Crawford Consulting Services  
Donald B. Crider, MD  
Dr. and Mrs. Scott D. Croll  
Dr. and Mrs. Samuel Cross Jr.  
Richard H. Daffner, MD  
Dr. and Mrs. H. Thompson Dale Jr.  
Dr. and Mrs. Peter M. Daloni  
Dr. and Mrs. George F. Daniels Jr.  
Magee L. DeFelice, MD  
Frank A. DeLia, DO  
David A. Dell, MD  
Michael A. DellaVecchia, MD, PhD, FACS  
Edward M. DeSole, MD  
William W. DeMuth, MD, FACS, and  
Cynthia T. DeMuth, MD  
Dr. and Mrs. Paul F. Dende  
Lawrence A. DeNino, MD  
DeSales University  
Dr. and Mrs. Ronald E. DiSimone

Christina B. Doll, MD, and Mr. David Doll  
Dr. and Mrs. Thomas W. Dooley  
Faye R. Doyle, MD, and Russell G. Doyle, MD  
Elizabeth T. Drum, MD  
Rosemary B. Duda, MD, MPH  
Dennis L. Eckels, DO  
Mahmoud K. Effat, MD  
Katherine C. Erlichman, DO, and Mr. Edward Erlichman  
Michael Feinberg, MD, PhD  
Dr. and Mrs. Herbert Fellerman  
M. Corazon G. Fernando, MD  
Dr. and Mrs. Rick S. Ferris  
Joel M. Fiedler, MD  
Todd Fijewski, MD  
Patrick Filip, MD  
Thomas J. Finkelston, MD, and Mia B. Finkelston, MD  
Dr. and Mrs. Todd R. Fisher  
Dr. Karin Flynn-Rodden  
Don C. Follmer, MD  
Mary E. Fontana-Penn, MD  
Dr. and Mrs. William P. Fowler  
Dr. and Mrs. David W. Frederick  
Dr. and Mrs. Martin L. Freifeld  
Nancy D. Frezza, DO

Dr. and Mrs. John P. Furia  
Lisa Galante, MD  
Dr. and Mrs. Kevin O. Garrett  
Dr. and Mrs. John C. Gaudio  
Dr. and Mrs. Laurence J. Gavin  
Sandra M. Gawchik, DO  
Gisoo Ghaffari, MD  
Kalyanmay Ghoshhajra, MD  
Dr. and Mrs. Charles V. Giannasio  
Dr. and Mrs. James H. Gilfoil  
Dennis L. Gingrich, MD  
David Girardi, DO  
Daniel J. Glunk, MD, and Margrit M. Shoemaker, MD  
Richard E. Gold, DO  
Dr. and Rabbi Harvey E. Goldberg  
Dr. and Mrs. Stephen M. Gollomp  
Dr. and Mrs. Russell L. Gombosi  
Candace R. Good, MD  
Dr. and Mrs. Mark A. Goodman  
Richard E. Grant, MD  
Dr. and Mrs. Todd D. Green  
Lawrence J. Guzzardi, MD  
Fawzi P. Habboushe, MD, FACS, and  
Christa P. Habboushe, MD

Barbara A. Haeckler, MD  
Mark C. Hagan, DMD, and Denise M. Kenna, MD, FACS  
Marsha L. Haley, MD  
Christopher F. Hannum, MD  
Dr. and Mrs. David A. Harinstein  
Gretchen A. Harmon, MD  
Melissa Harper  
Donald E. Harrop, MD  
Dr. and Mrs. Leo M. Hartz  
Dr. and Mrs. George W. Hartzell Jr.  
Joan Harvey, MD  
Jack HENZES, MD  
Anita J. Herbert, MD  
Andrew Herlich, MD  
Thelma L. Herlich, MD  
Dr. and Mrs. Creston C. Herold Jr.  
Dr. and Mrs. John Frederick Hiehle  
Dr. and Mrs. Everett C. Hills  
Deborah E. Hoellein, MD  
Mary T. Hofmann, MD, CMD  
Dr. and Mrs. Glen T. Hofstrom  
Robert C. Holman, RPh and Ingrid A. Holman, MD  
Dr. and Mrs. Elmer J. Holzinger  
Dr. and Mrs. Daniel W. Hottenstein

Carrie A. Hufnal, MD  
Anthony R. Ignoccheck, MD  
Dr. and Mrs. Asif Javed  
Jessica W. Jerrard, DO  
Edward W. Jew Jr., MD  
Sarala Johnson, MD  
Dr. and Mrs. Graham F. Johnstone  
Dr. and Mrs. David G. Jones  
Joseph C. Jones, MD  
Dr. and Mrs. George J. Jones  
Dr. and Mrs. Christopher R. Joy  
Dr. and Mrs. Carmen J. Julius  
Dr. and Mrs. Donald L. Kahn  
Denise Kalman, DO  
Elizabeth Kampmeinert  
Kevin P. Kane, MD  
Dr. and Mrs. Bindukumar C. Kansupada  
Dr. and Mrs. Ravi Kant  
Dr. and Mrs. Paul E. Karis  
David C. Kasarda, MD, and Marisa Laurora, DO  
Prakash Kaur, MD, and Mr. Harbans Singh  
Dr. and Mrs. William F. Keenan Jr.  
Dr. and Mrs. Charles F. Kelley Jr.  
Dr. and Mrs. James A. Kenning

Kent E. Kester, MD  
Dr. and Mrs. Quinn Kirk  
Kevin W. Kist Jr., DO and Kimberly M. Kist  
Steven E. Kitay, MD  
Walter M. Klein, MD  
Dr. and Mrs. Milton J. Klein  
Dr. and Mrs. Richard P. Kluff  
Dr. and Mrs. Aaron J. Kolb  
Mr. and Mrs. John G. Krah  
Dr. and Mrs. Vernon H. Kratz  
Marilyn B. Krch, MD  
Kalyan S. Krishnan, MD, and Geeta Krishnan, MD  
Albert S. Kroser, DO, FAAFP, FCPP  
Keith R. Kuhlengel, MD, FACS, and  
Barbara G. Kuhlengel, MD  
Roger L. Ladda, MD  
Dr. and Mrs. C. Darrell Lane  
Dr. and Mrs. Ralph A. Lanza  
Joseph W. Laskas, DO  
David C. Leber, MD  
Dr. and Mrs. Stanton S. Leboutitz  
Lawrence H. Lee, MD  
Lehigh County Medical Society  
Dr. and Mrs. Dean J. Leis

Edward D. Levin, PhD  
Drs. Jean A. Hosutt and Nicholas O. Lindberg  
Dr. and Mrs. Benjamin J. Lloyd  
Mai Pai Lok, MD  
Joy L. Long, MD  
Dr. and Mrs. Kevin J. Lorentsen  
Carol A. Love, MD  
Christina B. Lubold, MD and Joseph P. Lubold  
Dr. and Mrs. Thomas A. Lukaszczuk  
L. Dade Lunsford, MD  
Dr. and Mrs. Wilbert A. Lyons  
Anne L. Macek, MD, and Mr. Rek Macek  
Helga O. Magargal, MD  
Edward L. Malloy, MD  
Dr. and Mrs. William J. Malone III  
Dr. and Mrs. Camille J. Maravalli  
Lewis E. March, MD  
Dr. and Mrs. J. Campbell Martin  
H. Fred Martin, MD  
Dr. and Mrs. Robert F. Marvin  
Dr. and Mrs. Frederick R. Maue  
Gilbert C. McArdle, MD, and M. Jacquelyn McArdle, MD  
Dr. and Mrs. Edward J. McClain Jr.  
Dr. and Mrs. Lee H. McCormick

Dr. and Mrs. Douglas S. McCracken  
Robert F. McFadden, MD  
Joseph J. McHugh, MD, FACEP, and Mrs. Diane Dobbs  
Dr. and Mrs. Carey L. McMonagle  
William G. McNett, MD  
Dr. and Mrs. William J. McVay  
Leon J. Menapace, DVM  
Merck Partnership for Giving  
Martin R. Mersky, MD  
Allen E. Meyer, MD  
Dr. and Mrs. John P. Michel  
Dr. and Mrs. Donald B. Middleton  
Dr. and Mrs. Curtis T. Miyamoto  
Maryanne E. Modrak, MD  
Deborah K. Monko  
Dr. and Mrs. James W. Montague  
Angelica T. Montesano-Millos, MD  
John I. Moraca, MD  
Eileen Marie Moser, MD  
Elizabeth A. Moy, MD  
Mr. & Mrs. Robert Musser  
Neuropsychiatry Center  
Northampton County Medical Society Alliance  
Mary K. O'Connor, MD

John S. Oehrle, MD  
Dr. and Mrs. Robert C. Oelhaf, Jr.  
Karl R. Olsen, MD, and Ms. Martha E. Hildebrandt  
Charles F. Orellana, MD  
Steven M. Orland, MD  
Dr. and Mrs. Michael A. Orsini  
Mary D. Osbakken, MD  
Dr. and Mrs. Thaddeus A. Osial Jr.  
Dr. and Mrs. Timothy C. Oskin  
Dr. Edward M. Overfield  
Jill M. Owens, MD  
Radu I. Pacurariu, MD, FACS  
Frederico A. Padin, MD  
John J. Pagan, MD, and Mary E. Pagan, MD  
Pain Management of Williamsport, LLC  
Amelia A. Pare, MD, and Kyung S. Park, MD  
Joseph Pascal, MD, FACS, and Mrs. Elena Pascal  
Dr. and Mrs. Timothy P. Pastore  
Joseph C. Paviglianiti, MD  
Stephen G. Paxson, DO  
Timothy D. Pelkowski, MD  
Dr. and Mrs. Frank R. Penater  
Haragopal S. Penugonda, MD, and  
Dwaraki B. Penugonda, MD

Dr. and Mrs. Wesley H. Peterson  
Philadelphia College of Osteopathic Medicine  
Ronald B. Phillips, DO  
Dr. and Mrs. John G. Phillips  
Dr. and Mrs. Paul A. Piccini  
Honorable and Mrs. Thomas A. Placey  
Gwendolyn A. Poles-Corker, DO  
Dr. and Mrs. Evan J. Pollack  
Frederick L. Porkolab, MD, and Margaret V. Ragni, MD  
Dr. and Mrs. Robert H. Potter Jr.  
Danae M. Powers, MD  
Julie A. Prazich, MD  
Dr. and Mrs. George R. Pronesti  
Melissa A. Pugliano-Mauro, MD  
Pulmonary Allergy & Sleep Associates  
Olga Radkevich-Brown, MD  
Dr. and Mrs. Rodwan K. Rajjoub  
Elizabeth A. Ramsey, DO  
Brenda L. Raphael, MD, and John P. Raphael  
Dr. and Mrs. Gerald A. Ravitz  
Paul L. Reardon Jr., MD  
Dr. and Mrs. James W. Redka  
Carol Regueiro, MD  
Christopher Reilly, MD, and Teresa Bianco, MD

Dr. and Mrs. Myron E. Resnick  
Jonathan E. Rhoads, MD  
John S. Richards, MD  
Karen A. Rizzo, MD, FACS, and Jay A. Rizzo, DMD  
John M. Roberts, MD, FACS  
John J. Robertson, MD  
Dr. and Mrs. David M. Roda  
Richard E. Rohr, MD  
Dr. and Mrs. Domenick N. Ronco  
Bruce Roscher  
Mrs. Donna B. Rovito  
Melanie A. Ruffner, MD  
Ravindra Sachdeva, MD  
Kym A. Salness, MD, FACEP  
Dr. and Mrs. Mark H. Sanders  
Dr. and Mrs. Milton J. Sands Jr.  
Sanofi US  
Joseph W. Sassani, MD  
Dr. and Mrs. Satish M. Sawardekar  
Dr. and Mrs. William E. Schaeffer Jr.  
Madalyn Schaeffgen, MD  
Drs. John C. and Beverly B. Schantz  
Steven K. Schirk, MD, FACEP  
Stephen M. Schleicher, MD

Dr. Nathan Schnall  
Dr. and Mrs. Forrest A. Schucker  
Dr. and Mrs. Peter L. Schwartz  
Lynnae Schwartz, MD  
Lucyann M. Sciandra, DO  
Dr. and Mrs. Mohammad Shafique  
Robert G. Sharrar, MD  
Arlin J. Silberman, DO, and  
Marilyn J. Heine, MD, FACP, FACEP  
Dr. and Mrs. Ajay P. Singh  
Dr. and Mrs. Raymond L. Smith  
David N. Speranza, MD  
Carmen E. Spinney, MD  
Squirrel Hill Caduceus Group  
Malini Stalam, MD, and Mr. Vic Stalam  
Lyndia C. Stauffer  
Mrs. Mary Jane Stoner  
Dr. and Mrs. Vance R. Stouffer Jr.  
Michelle N. Stram, MD  
Dr. and Mrs. Vincent D. Stravino  
Dr. and Mrs. Patrick Strollo Jr., MD  
Elizabeth A. Sun, MD  
Sakdidej Suwan, MD, and Nipapan Suwan, MD  
Dr. and Mrs. Keith W. Sweigard

Richard J. Szarko, MD, and Kathryn Peroutka, MD  
Susan A. Tallick, MD, FACEP  
Ellen M. Tedaldi, MD  
Elaine A. Thallner, MD, FACEP, and  
Mr. Jeffrey A. Bomberger  
Gary A. Thomas, MD  
Stephen T. Thuahnai, MD  
Lawrence W.C. Tom, MD  
Drs. Robin G. and Flora M. Torres  
Dr. and Mrs. Steven J. Triantafyllou  
Dr. and Mrs. Hani J. Tuffaha  
William A. Tuffash, MD  
Onuorah I. Umeh, MD  
Upper Makefield Business Association  
Dr. and Mrs. Paul J. Valigorsky II  
Dr. and Mrs. Suneel S. Valla  
Daniel P. Verges, MD  
Mr. and Mrs. Lou Vidic  
Chad P. Walker, DO  
David R. Watters  
Annette M. Weaver  
Daniel I. Weber, MD, and Nina M. Castillo  
Dr. and Mrs. Phillips P. Wedemeyer  
Jane A. Weida, MD



Dr. and Mrs. Sigmund A. Weitzman  
Dr. and Mrs. William C. Welch  
Dr. and Mrs. Wayne L. Weston  
Mrs. Metza Whiteley  
Dr. and Mrs. Thomas A. Witkowski  
James Wong, MD  
Anne M. Woods, MD, and Mr. Charles E. Strehl  
Dr. and Mrs. George A. Woodward  
Dr. and Mrs. John A. Yauch  
Dr. and Mrs. G. Alan Yeasted  
Dr. and Mrs. George A. Yesenosky  
Dr. and Mrs. Young-Kul Yoo  
Dr. and Mrs. Thomas A. Young  
Dr. and Mrs. Leonard B. Zadecky  
Dr. and Mrs. Daniel G. Zavadak  
Joan H. Zeidman, MD  
Jolanta Zelaznicka, MD

#### Contributor Up to \$99

Dr. and Mrs. Elias M. Abboud  
Dr. and Mrs. Richard P. Abramowitz  
Jose R. Acosta, MD  
Paul Ahlers, MD  
Joseph C. Alario, DO

Dr. and Mrs. Mark E. Alden  
Dr. Lisa S. Allen  
Domingo T. Alvear, MD, and Veneranda B. Alvear, MD  
Dr. and Mrs. Joseph A. Anistranski  
Donna L. Antonucci, MD, and Mr. I. Bruce Schwartz  
Mrs. Catherine Arner  
Dr. and Mrs. Barry J. Asman  
Stanley J. Aukburg, MD  
Edward J. Baranski, MD, FACS  
Dr. and Mrs. Ronald B. Barg  
Dr. and Mrs. James C. Barton  
Fouad A. Bassilios, MD  
Derek J. Baughman, MD  
Dr. and Mrs. Neil B. Baum  
Edward L. Bedrick, MD, and Ms. Amy Brantz  
Arlene P. Bennett, MD  
Dr. and Mrs. Joseph P. Bering Jr.  
M. Arshad Bhatti, MD  
Dr. and Mrs. Jeffrey S. Blinder  
Linda M. Bloom, MD  
Dr. and Mrs. Robert P. Blume  
Michael A. Bookman, MD, and Maria Pia Platia, MD  
Dr. and Mrs. Frank A. Borgia  
Charles D. Boucek, MD

Alan B. Brackup, MD, FACS  
Dr. and Mrs. Thomas G. Brandecker  
Thomas J. Brouse  
Wilma K. Brucker, MD  
Ramon C. Burket, MD  
Linda Caballero Goehring, MD  
Dr. and Mrs. James F. Caggiano  
Lucy J. Cairns, MD  
John S. Carson, MD  
Raymond M. Catton, MD  
Stanley S. Chaplin, MD, and Ms. Janet Giuliani  
Dr. and Mrs. Richard H. Charney  
Dr. and Mrs. Arthur Chernoff  
Drs. Lindy Lee W. and Maurizio Cibischino  
Stephanie Ciccarelli, MD  
Dr. and Mrs. Charles E. Cladel  
Dr. and Mrs. Joseph R. Codispoti  
Donna Cohen, MD  
Bruce S. Cohick, MD  
Liane Conte, DO  
Adrian D. Copeland, MD  
Letitia Ann Cosbert, MD  
Dr. and Mrs. Randall C. Cronin Jr.  
Edmond Cronin, MD

John F. Curtis, IV  
Marjorie Curtis-Cohen, MD  
Patricia L. Dalby, MD  
Cristina I. Danila, MD  
Neal M. Davis, DO  
Olivier De Senarclens, MD  
Kimberly Keane DeNick, MD  
Ram L. Dhawan, MD  
Dr. and Mrs. Nicholas J. Dillman  
Anne M. Dobrzynski, MD  
Nicholas J. D'Orazio, MD  
Bonnie B. Dorwart, MD, and Mr. William Dorwart  
Christine S. Dotterer, MD, and Richard J. Butcher, MD  
Kristen A. Ehrenberger, MD, PhD  
Dr. and Mrs. Joseph G. English  
Maria C. Escano, MD  
Robert A. Ettlinger, MD  
Madeleine Q. Ewing MD, FACS  
Amtul S. Farheen, MD  
Jeffrey M. Farma, MD  
Leo M. Fatur, MD  
Dr. and Mrs. Kalmen A. Feinberg  
Richard E. Ferraro, MD, and Katarzyna M. Ferraro, MD  
Dr. and Mrs. Gary S. Fischer

Laura H. Fisher, MD, and Justin Fisher, MD  
Alan N. Fleckner, MD  
Dr. and Mrs. F. Lamar Foley Jr.  
Carl A. Frankel, MD, and Sharon R. Frankel, MD  
Dr. and Mrs. James W. Freeman  
Dr. and Mrs. William A. Freeman  
Victor Friday  
Christine M. Gallis, MD, and Mr. Gary Gallis  
Joseph A. Garabedian, MD  
Gastroenterology Association of Central PA  
Eugene A. Gatti, MD  
Fouad A. Geadah, MD  
Tara Gensemer  
Dr. and Mrs. Arthur M. Gershkoff  
Dr. and Mrs. John D. Giardino Jr.  
Alex Glijanek, MD  
Susan Goodwin  
Johanna H. Gorman-Catton, MD, and Raymond M.  
Catton, MD  
Fred Gorstein, MD  
Mark G. Graham, MD  
Dr. and Mrs. Lawrence S. Greenfield  
Dr. and Mrs. Joseph Guaraldo  
Anuranita Gupta

Dr. and Mrs. Daniel Haimowitz  
Alexander M. Hamling  
Shenggao Han, MD, and Mrs. Xianwen Qiao  
Dr. and Mrs. Robert H. Hanna  
Brian A. Hannah, MD  
Andrew Harvan  
Kurt M. Heil, MD, and Jane Hughes, MD  
Dr. and Mrs. Timothy M. Heilmann  
Sarah E. Henrickson, MD  
Decosy D. Hercules, DO  
Dr. and Mrs. Sanford L. Herold  
Dr. and Mrs. Todd M. Hertzberg  
Nathan A. Hoff  
Neil A. Hoffman, MD, and Mrs. Judith Kraines  
Nichole L. Hossler, MD, and Eric W. Hossler, MD  
Dr. and Mrs. Martin Hudzinski  
Dr. and Mrs. George R. Hunter  
Mercedes P. Jacobson, MD  
Christine E. James, DO  
Donald Jenkins II, DO  
Ryan M. Jennings, MD  
Lynn C. Johnston, MD, and Boutros M. Zeidan, MD  
Alana Jones  
Jennifer M. Joyce, MD

Dr. and Mrs. Donald B. Kamerer  
Dr. and Mrs. Thomas N. Kaminski  
Ioanna Kanellitsas, MD  
Elizabeth Kann, MD, and Uday K. Dasika, MD, FACS  
Dr. and Mrs. Thomas J. Kardish  
Drs. John J. and Barbara A. Kelly  
Tatyana Kemarskaya, MD  
Aamir Khan, MD  
Young S. Kim, MD  
Stephanie A. Knapp, DO  
Richard Z. Kondratowski, MD  
Dr. and Mrs. Alexander Kosenko  
Dr. and Mrs. Robert Kricun  
Robert J. Kucejko, MD  
Lisa M. Kwisnek-Lamantia, DO  
Dr. and Mrs. Ronald A. Landay  
Daniel J. Leonard III, MD  
Gregory L. Lewis, MD  
Dr. and Mrs. Maurice J. Lewis  
Wilma C. Light, MD  
Darren R. Linkin, MD  
Louise M. Lisi, MD  
Lynn M. Lucas-Fehm, MD  
Katherine H. Lund, DO

Andrew Lutzkanin III, MD  
John C. Lychak, MD  
Kathleen E. Magness, MD  
Lauren R. Maher, MD  
John P. Maher, MD, MPH  
Mr. and Mrs. Timothy J. Mahoney  
Lisa Diane Makrides, MD  
Elisa B. Mandel, MD  
Gregory V. Marcotte, MD  
Radames Martinez Jr., MD  
Emily W. Matlin, DO  
Dr. and Mrs. Michael K. Matthews  
Dr. and Mrs. Stanley P. Mayers, Jr.  
John N. McCartney, DO  
Dr. and Mrs. Deepak Mehrotra  
David L. Mevorach, MD  
Ricardo J. Mitre, MD  
Dr. and Mrs. Jeffrey A. Mogerman  
Dr. Patricia A. Montgomery and Mr. Montgomery  
Dr. and Mrs. David H. Moore  
Eleazar Morris, MD  
Dr. Darilyn V. Moyer and Mr. Scott B. Rosenberg  
Lisa C. Murcko, MD  
Dr. and Mrs. Matthew B. Naegle

Gillian R. Naro  
Lee M. Neiman, MD  
Duy B. Nguyen, MD  
Dr. Steven J. Nussbaum  
Ward J. Odonnell, MD  
Dr. and Mrs. Donald Oken  
Theodore Oslick, MD  
Dr. and Mrs. Khatchadour B. Palandjian  
Dr. and Mrs. Fernand N. Parent Jr.  
Carolyn E. Parry, MD  
Sam Patel  
Mamta D. Patel, MD  
Nicholas A. Pawlowski, MD  
Roger D. Peterson, MD  
Dr. and Mrs. Spencer D. Phillips  
Dr. and Mrs. Douglas Pieper  
Steven B. Pinckney, DO  
Karen L. Pinsky, MD  
Dr. Michael J. Platto  
Dr. and Mrs. Francis C. Plucinsky  
Dr. and Mrs. Desmond J. Reilly  
Dr. and Mrs. J. Jeffrey Rich  
Bruce D. Richman, DO  
Brandi Ring, MD

Susan W. Robbins, MD  
Anthony R. Rooklin, MD  
Dr. and Mrs. Howard B. Rosen  
Larry A. Rotenberg, MD  
Beverly R. Roth, MD  
Dr. and Mrs. Jay Evan Rothkopf  
Dr. and Mrs. John F. Russo  
Dr. and Mrs. Victor H. Santillan  
Anne L. Saris, MD  
Dr. and Mrs. Harold Z. Scheinman  
Dr. and Mrs. Ralph Schmeltz  
Ira Schwartz, MD, PhD, FACS  
Riddhi S. Shah, MD  
Dr. and Mrs. Mark P. Shampain  
Dr. and Mrs. Scott E. Shapiro  
Dr. and Mrs. Steven A. Shapiro  
Catherine M. Sharkness, MD  
David R. Shellenbarger, MD  
Margrit M. Shoemaker, MD  
Dr. and Mrs. Eugene Shuster  
Richard R. Silbert, MD, and Ms. Jeanne E. Quinn  
Dr. and Mrs. Joseph S. Silverman  
Robert E. Silverman, MD, PhD, and Randi Y. Leavitt, MD  
Deborah W. Sims MD, FACS

Rajendra Singh, MD  
Kelly K. Siu, MD  
Jonathan R. Siuta, MD  
Shanthi Sivendran, MD  
Sonela Skenderi, DO  
Thomas F. Smith, Sr.  
Mr. & Mrs. Robert Smith  
Dr. and Mrs. Stanton N. Smullens  
Mrs. Helen Snyder  
Dr. and Mrs. Barry J. Snyder  
Dr. and Mrs. Martin L. Spangler  
Birute Stewart, MD  
Lori M. Storm  
Dr. and Mrs. William J. Strowhouer  
Maria J. Sunseri, MD, and Mr. Vincent Sunseri  
Dr. Tasneem A. Z. Syed  
Dr. and Mrs. Edward E. Szoke  
Jerome H. Taylor, Jr., MD  
Dr. and Mrs. Richard L. Tepper  
Dr. and Mrs. Jerry W. Terwilliger  
David G. Thimons, DO  
Bruce L. Thomas MD, FACP  
Diane W. Thomas  
Dr. and Mrs. Walter H. Tsou

John M. Vasudevan, MD  
Christine R. Viola, DO  
Dr. and Mrs. Ronald E. Wasserman  
Dr. and Mrs. Edmond C. Watters  
Dr. and Mrs. Malcolm S. Weiss  
Bruce L. Wilder, MD  
Dr. and Samuel G. Woodings  
Elizabeth A. Yasik, MD  
Aaron L. Yazdian, MD  
Nasr I. Yazigi, MD  
Adrienne M. Young, MD, and Allen I. Wolfert, MD  
J Q Michael Yu, MD  
Dr. and Mrs. Dennis J. Zeveney Jr.

## 2020 MEMORIAL CONTRIBUTIONS

---

### **Raymond H. Arner, MD**

Mrs. Catherine Arner

### **C. Theodore Blaisdell, MD**

Lehigh County Medical Society

### **Maureen Callahan**

Dauphin County Medical Society Alliance

### **William Coles**

Joseph Pascal, MD, FACS, and Mrs. Elena Pascal

**Thomas F. Dowd, MD**

Kathleen M. Bernau, RN

**Scott A. Gunder, MD**

F. Wilson Jackson III, MD, and Cynthia L. Jackson, MD

**John H. Hobart, MD**

Lehigh County Medical Society

**Russell B. Puschak, MD**

Lehigh County Medical Society

**John W. Reinhart, MD**

Lehigh County Medical Society

**Marina A. Schmidt**

Mr. and Mrs. Richard Phillips

Dr. and Mrs. Gary B. Calandra

Mrs. Judith M. Bucko Herman

Upper Makefield Business Association

**George S. Smith Jr., MD**

Lehigh County Medical Society

**John S. Wheeler, MD**

Lehigh County Medical Society



## DONATE & HONOR

The Foundation thanks donors who made gifts:  
*in honor of outgoing PAMED President Lawrence John, MD*

### TRIBUTE GIFTS – GIFTS RECEIVED IN HONOR OF

**Marilyn J. Heine, MD, FACEP, FACP**

Dr. and Mrs. Jerome M. Burke

**Abram M. Hostetter, MD**

Raymond C. Truex Jr., MD, FAANS, FACS

**Lawrence R. John, MD**

Mr. and Mrs. Lou Vidic

Crawford Consulting Services

Dr. and Mrs. Thaddeus A. Osial Jr.

Lori M. Storm

Michael A. DellaVecchia, MD, PhD, FACS

Danae M. Powers, MD

Chad P. Walker, DO

Dr. and Mrs. John R. Mantione Jr.

Dr. and Mrs. William F. Coppola

L. Dade Lunsford, MD

Jill M. Owens, MD

Dr. and Mrs. John R. Mantione Jr.

Timothy D Pelkowski, MD

Andrew Harvan

D. Michael Baxter, MD, and Mrs. Denise Curran



Dr. and Mrs. Graham F. Johnstone  
Raymond C. Truex Jr., MD, FAANS, FACS  
Elizabeth Kampmeinert  
Dr. and Mrs. Theodore A. Christopher

**Danae M. Powers, MD**

Dr. and Mrs. Donald E. Martin

**Raymond C. Truex Jr., MD, FAANS, FACS**

Eden Charitable Foundation

**FOR MORE THAN 60 YEARS,  
the Foundation of the Pennsylvania Medical Society has been  
serving physicians during life's most challenging moments.**

If you would like to make a gift to support our mission, please visit  
[www.foundationpamedsoc.org/donate](http://www.foundationpamedsoc.org/donate).

## FOUNDATION 2020 SUSTAINER'S CIRCLE

The Sustainer's Circle is a special group of donors who provide a sustaining stream of support for Foundation programs through their regularly scheduled monthly contributions.

Stephanie Benner  
Gary Bonfante, DO  
Tiffany Booher, MA, LPC, CAADC, CIP, CCSM  
Barry D. Buckingham  
Kenneth M. Certa, MD  
Dr. and Mrs. William R. Dewar III  
Dr. and Mrs. Martin L. Freifeld  
Virginia E. Hall, MD, FACOG, FACP, and  
Mr. John B. Hall  
Melissa Harper  
Robert E. Haughey, MD

Daniel B. Kimball Jr., MD, FACP, and  
C. Eve J. Kimball, MD  
Clifford H. Lyons, MD  
Deborah K. Monko  
Gwendolyn A. Poles-Corker, DO  
Martin P. Raniowski, MA  
Bruce Roscher  
Dr. and Mrs. Jaan E. Sidorov  
Raymond C. Truex Jr., MD, FAANS, FACS  
Annette M. Weaver  
Heather A. Wilson, MSW, CFRE, CAE



We thank our volunteers and staff for their skill and leadership.

### PHP ADVISORY COMMITTEE

Laura Delliquadri, PAC, *Chair*  
Edward Jew, MD, *Vice Chair*  
John Lepley, DO, *Secretary*  
Gregory Famiglio, MD  
Martin Freifeld, MD  
Steven Heird, MD  
Charles McClure, MD  
John Mellett, DMD  
Clifford D. Swift III, Esq.  
Louis Verna, MAC, LPC, CIP  
Christopher Ware, MD

### PAMED CHARITABLE TRUST BOARD

Paul F. Dende, DO, FACP  
Sherry L. Blumenthal, MD  
Jeffrey M. Farma, MD  
Gwendolyn A. Poles, DO, FACP

### FINANCE COMMITTEE

William J. West Jr., MD  
Paul F. Dende, DO, FACP  
Virginia E. Hall, MD, FACOG, FACP (Ex-Officio)  
Gwendolyn A. Poles, DO, FACP

### LIAISON TO THE PENNSYLVANIA MEDICAL SOCIETY BOARD

Candace R. Good, MD

## CURRENT FOUNDATION STAFF

Heather A. Wilson, MSW, CFRE, CAE, *Executive Director*  
Tiffany M. Booher, MA, LPC, CAADC, CIP, CCSM, *Director, Physicians' Health Program*  
Susan Caputo, *Manager, Finance & Compliance*  
Cassandra B. Davis, MA, *Communications Coordinator*  
Melissa J. Devonshire, MBA, CADC, CCDP, *Case Manager, Physicians' Health Program*  
Alice Dunkin, NAPT4, *Assistant Case Manager*  
Wendie L. Dunkin, *Compliance Assistant, Physicians' Health Program*  
Katie L. Gruber, MSW, CADC, *Case Manager, Physicians' Health Program*  
Edwin Kim, MD, MRO, *Medical Director, Physicians' Health Program*  
Marcia A. Lammando, RN, BSN, MHSA, *Director, LifeGuard Program*  
Deborah K. Monko, *Director, Student Financial Services*  
Lori M. Storm, *Manager of Philanthropy & Hospital Relations*  
Kathleen Thiemann, LSW, *Case Manager, Physicians' Health Program*  
Carolyn C. Thompson, *Case Coordinator, LifeGuard Program*  
Raymond C. Truex Jr., MD, FAANS, FACS, *Medical Director, Physicians' Health Program*  
Annette M. Weaver, *Senior Director, Finance & Operations*  
Charlotte D. Wilson-Manley, *Donor Relations & Governance Administrator*  
Dana M. Youtz, *Administrative Assistant, LifeGuard Program*

*The official registration and financial information of the Foundation of the Pennsylvania Medical Society may be obtained from the Pennsylvania Department of State by calling the toll-free number within Pennsylvania, 1-800-732-0999. Registration does not imply endorsement.*

*We have made every effort to properly recognize our generous donors. If we have made an error, we apologize. Please contact us so we can correct our records. If your gift is made via a donor-advised fund, please note that by the terms of the gift, the fund name is recognized as the donor of record.*



*Stock photography courtesy of freepik.com.  
Design and layout by Amanda W. Chilton.*



**The Foundation**  
of the Pennsylvania Medical Society

400 Winding Creek Blvd., Mechanicsburg, PA 17050-1885

(717) 558-7750 | [www.foundationpamedsoc.org](http://www.foundationpamedsoc.org)