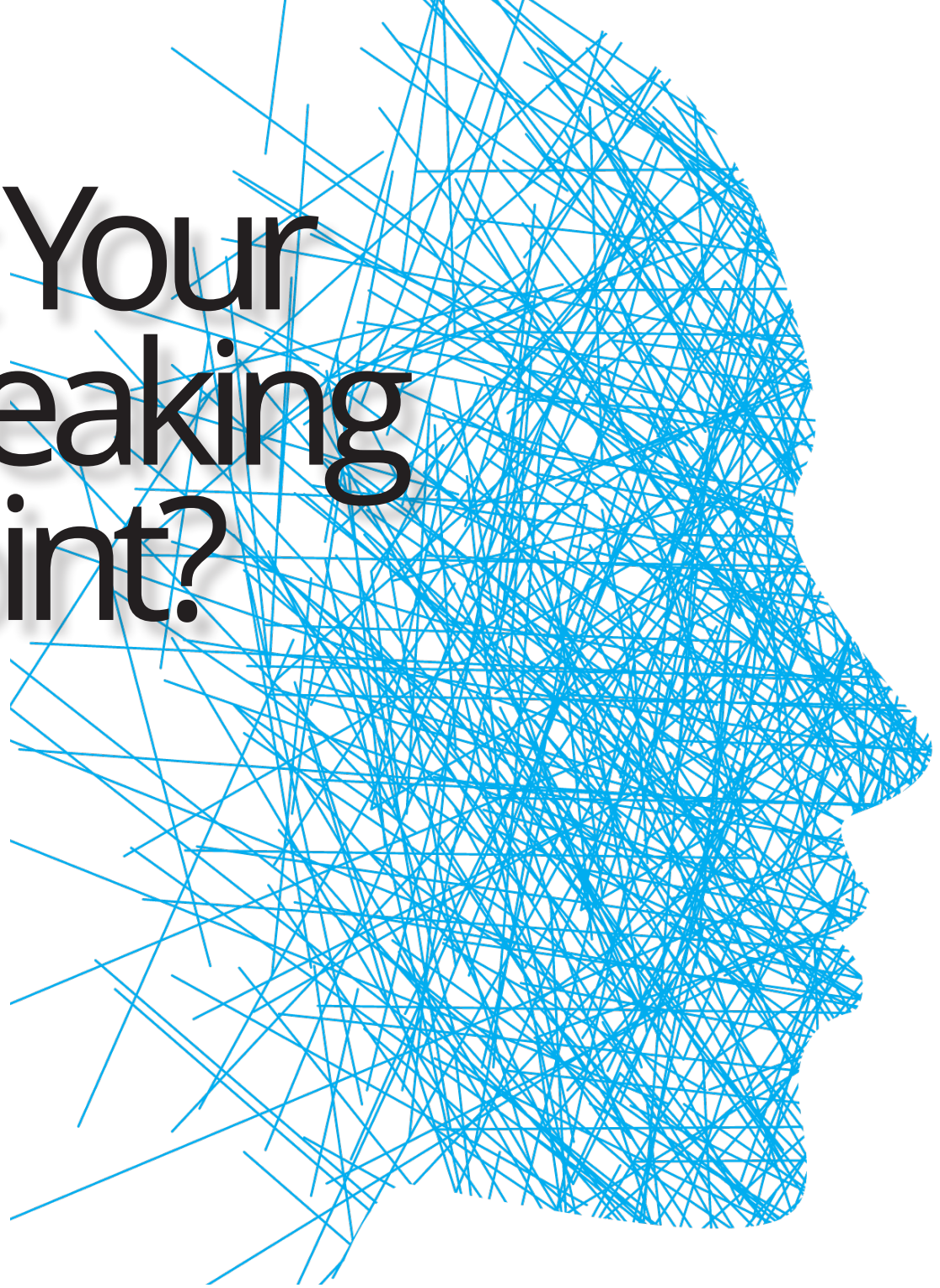


At Your Breaking Point?



The Nurses' Health Program provides support to eligible health care professionals* struggling with substance use disorders, mental health and behavioral concerns.



Nurses'
HEALTH
Program

A Peer Assistance Monitoring Program of the
Foundation of the Pennsylvania Medical Society

(888) 647-4968 • nhp-foundation@pamedsoc.org • www.foundationpamedsoc.org/nhp

*Nurses, student nurses and dietician-nutritionists